



# DUNCHURCH VILLAGE MAGAZINE

SEPTEMBER 2022

ISSUE 16



*One of three new RHS/FODS  
wild flower plantings on Rugby  
Road. Photo: Alison King*

## IN THIS ISSUE

Welcome	2
Dunchurch and Thurlaston Educational Foundation	9
Kitchens on the square	10
Dunchurch Parish Council	12
Dunchurch Festival Group	14
In memory of Brian Forbes	15
Little Princess Trust	16
Sportsfield and Village Hall	17
Dunchurch Allotment Association	19
Rugby Cycling Group	21
Pantomaniacs	23
Post Office	23
Dunchurch Oak Line	24
Rugby Webb Ellis 41 Club	25
Doctors in Dunchurch	27
School News	29
Neighbourhood Watch	31
St Peter's Churchyard	33
Dunchurch Traders	34
Baptist Church	36
Girl Guiding	37
Directory	38

PRODUCED BY FRIENDS OF DUNCHURCH SOCIETY

[www.friendsofdunchurchsociety.org](http://www.friendsofdunchurchsociety.org)

email [friendsofdunchurch@gmail.com](mailto:friendsofdunchurch@gmail.com)

Formed by likeminded residents who love Dunchurch and its heritage and wish to protect and enhance its environment in order to make the village a better place to live in, work in and visit.



FRIENDS OF  
DUNCHURCH  
SOCIETY (FODS)

## Welcome

**W**e are a nation obsessed with the weather and this is so true when it comes to Britain in Bloom. Our previous Heart of England judging day saw everyone soaked to the skin as the heavens opened, whereas this year, we fried in scorching heat! Both extremes make looking after the plants very difficult but perseverance by FODS volunteers has helped to keep the blooms alive.

In his article about the fete, Rob Collings, Chair of Dunchurch Festival Group, also refers to the weather forecast. Thankfully, the fete was a great success and went ahead in almost perfect weather, although there are fewer places in Dunchurch where the breeze picks up quicker than on the village sportsfield. Just ask anyone who has ever tried to set up a stall or erect a gazebo!

Come rain or shine, by the time this magazine is issued, Dunchurch will have represented the Heart of England in the RHS Best Large Village category and we eagerly await the outcome. Whatever it is, it won't be for the want of hard work and there is surely one thing we can all agree on, the village has never looked better. Hopefully this will encourage

more visitors to the village and in turn, bring benefit to our local businesses.

Speaking of businesses, it is pleasing to see another one opening and we welcome Stefan and his team from The Kitchens Inc. We wish them a long and profitable association with Dunchurch.

Congratulations also to Anne-Marie's Florist who so impressed Harrods with a sample of her work that it has been used in a window display. What an endorsement!

Read on for more news from a variety of contributors, and keep your fingers crossed for a winning result in our campaign to be voted Best Large Village.

**FODS News**  
**Dunchurch Beacon**, 2nd June – Unlike our Jubilee picnic which was cancelled due to inclement



*The Dunchurch Jubilee Beacon*



*The beacon watched by villagers*

Mayor, Carolyn Watson-Merret lit the gas fired burner using an extended poker. As the beacon flamed, the crowd sang God Save The Queen accompanied by Bugler Colin Worrall, bringing to an end a unique and historic village event.

weather, we held our inaugural lighting of the new signal beacon on The Heath. A recreation of a traditional design from Roman times, the Dunchurch beacon is officially registered as one of 1,500 nationwide and holds a Certificate of Grateful Recognition for the part played in Her Majesty's Jubilee celebrations.

The ceremony began at 9.00 pm with Pipe Major Vincent Deery playing a welcoming tune on his bagpipes as hundreds of villagers arrived. The unveiling ceremony commenced with a blessing of the beacon by St Peter's vicar the Rev Patricia Townshend, and MC Guy Watt introduced the assembled ceremony group. This included DPC Chair Tracy Price who unveiled the brass plaques fixed to the 16ft oak post which supports the steel brazier. Madam Rugby

**Thanksgiving service at St Peters Church, 3rd June** – The service which was very well attended began with a procession into church.

Music was provided by the District of Dunchurch Band conducted by Garry Smallwood, Dunchurch Voices sang Rose of England and organist Richard Copeland accompanied the singing of congregational hymns on the newly restored church organ. After the service, tea was served ending a most delightful occasion of thanksgiving for Her Majesties 70 year reign. A joy for all on a joyous occasion.

**The Friends of Dunchurch Oak** – This is the name given to the FODS English oak which is one of ten now thriving on The Heath. Mike Judge's vision perfectly matches the aspirations of

FODS and we were delighted to collaborate on the project. Thank you Mike for providing the village with this wonderful legacy and a huge vote of thanks to the Water Angels who have been tending to the trees. (See page 24 for more)

**Platinum Jubilee Crowns** – 70 of these were hidden around the village for children to find and keep. It was lovely to see so many Facebook photos of children who had found them.



Luca aged 2½ loved his platinum jubilee crown

**Plastic Art Display** – Collaborating with the 1st Dunchurch Guides, this display to commemorate the Queens Platinum Jubilee also highlights the harm of plastics. Our thanks to the Guides for researching and providing some very



Fact: gardening is good for your health!

thought provoking facts.

Planted  
by the  
residents of  
Dunchurch  
Park



**Floral Displays** – We are grateful to all who planted up a trough or a wheelbarrow. This year, we had almost 40 Blooming Barrows including some planted by the residents from Dunchurch Park, the prisoners from HMP Onley and several by village residents who have displayed them on their street. Thank



Lawrence and Lyra are rightly proud of their contribution to Britain in Bloom



SIGN UP  
FOR OUR  
OPEN DAY  
ON 12TH  
NOVEMBER



# LITTLE GRANGE

NURSERY

*A Rugby School Group nursery offering quality care  
and education on our idyllic 90-acre site*



*To find out more,  
scan the QR code  
to access the  
contact form and  
one of our team  
will be in touch*

Pathway to Bilton Grange  
or to local primary school

Outstanding provision for  
ages six months to five years

**REGISTER INTEREST FOR SUMMER 2023**

you. They really make a difference.

The addition of the lamppost hanging baskets could be a game changer in our Britain in Bloom entry. Our thanks to Bilton Grange School and Nursery for their generous sponsorship.



*Blooming Barrow planted by the surgery (above)*

*New hanging baskets against the backdrop of the refurbished thatched bus stop (far right)*



## The Rainbow Tree

– The simple act of leaving a heartfelt note for others to read has really caught on and we have never had so many



*The Rainbow Tree*

thought-provoking and inspiring messages. You can find them on the memorial green by the Alms Houses.

**Hands up for Dunchurch** – Thank you to everyone who came and made a handprint on our large art display and to Wendy for overseeing this. It was great fun to do and very eye catching.



**Staddle Stones** – Thank you to Claire from The Old Holt for allowing us to yarn bomb the beautiful Staddle Stones that line her front garden. In only a few weeks, a group of ladies produced

*Hands up for Dunchurch in the making*



## NEWLY RELEASED CANALSIDE HOMES IN RUGBY

Make your move this spring to your dream home at The Moorings in Rugby. With quality townhouses situated by the Oxford Canal, you can enjoy canalside walks or simply take in the views from your Juliet balcony.

**3 and 4 bedroom homes from £351,995**





*Just one of the eight stunning staddle stone creations*

some wonderful creations. Our thanks to them for their time and artistry.

**Warwickshire Community & Voluntary Action Awards** – Sponsored by Rugby Borough and Warwickshire County Council, these were held at the village hall on Wednesday 20th July and amongst the very worthy winners were two from Dunchurch. Phill Freeman won an Unsung Hero award for his many years of voluntary work in the village and the FODS Gardening Group led by Sue Turner collected the Environment Award. We thank all concerned for their selfless contribution to village life.

At the same event 189 volunteers from the Locke House Vaccination Centre, several of whom are from Dunchurch, also received an award for their work during the Covid pandemic (accepted on their behalf by five representatives).

**Magazine Pickup Points** – As well as delivering 1,700 free copies to Dunchurch residents, we have now increased our pickup points. These are Dunchurch Post Office, Wanda Fashions, the Library, Anne-Marie's Florist, Rugby

Road Newsagents, the Village Hall and the Baptist Church. You can also see every edition of the magazine on the FODS website under the news link.

**Volunteers** – We asked our FODS volunteers what volunteering meant to them and here are just some of their responses.

**'Being in FODS helps bring together people of varying ages**



**As good as new**

The statue had a good clean in time for the Britain in Bloom judging day.



in social interaction and working towards a common community goal which benefits the whole village and hopefully gives people pride in where they live.'

'Being a member has opened new doors and I cherish the new friendships made.'

'Before I joined FODS I lived in the village. Now I am part of it.'

'The group is made up of lovely people who are great company, all striving to enhance the environment of our special village.'

'The appreciative and encouraging

remarks from passers-by make the happy time spent around the greens all the more rewarding!'

'The exercise being out with FODS has helped my mobility and the coffee afterwards has given me an opportunity to learn more about Dunchurch.'

'It's great being part of the group, thank you.'

If you would like to find out more about being a volunteer, email [info@vghrugby.co.uk](mailto:info@vghrugby.co.uk) or telephone Sue on 07983 345381. Thank you. We would love to hear from you.

## Are you under 25 and needing financial help with your education?

**D**unchurch and Thurlaston Educational Foundation (Registered Charity number 528738) was set up in 1967. It can make grants for educational or training purposes to young persons who have not attained the age of 25 years and who reside, or whose parents reside, in the parishes of Dunchurch and Thurlaston and who in the opinion of the Governors are in need of financial assistance. It can also make grants to voluntary organisations which provide educational or certain other benefits

for such young persons. In addition, the Foundation can help the Dunchurch Infant and Junior Schools with benefits which would not normally be provided by the Local Educational Authority.

The income of the Foundation is fairly modest – about £2,800 last year – but if anyone wants to be considered for a grant please contact the Clerk to the Governors, Paul Smith at 11 Bilton Lane Dunchurch Rugby CV22 6PY or telephone 01788 810635 or email [ppp-smith80@hotmail.com](mailto:ppp-smith80@hotmail.com).

## Kitchens on the Square

**B**y September we will have a new shop on the Square, designing and selling high quality kitchens. We asked Stefan Brown, who runs Kitchens Inc with Siobhan and Claire, to tell us more. He sent us the following:

“The Kitchens Inc is an independent business that believes that every living space should be completely tailored to its users taste and lifestyle.

Siobhan and Stefan have been designing for over 30 years between them, so there’s very little they don’t know about making the most of any kitchen space, no matter it’s shape or size.

Claire, who is also vastly experienced in the industry, works closely alongside suppliers and fitting teams ensuring a first class installation service.

In 2018 The Kitchens Inc opened their 1000 sq ft design studio in Leamington Spa, which has been a huge success.

This autumn will see them open their second location, on the famous village square, in the beautiful Warwickshire village of Dunchurch.

“We’re completely renovating the old corner shop to become an emporium of



*textures, surfaces and materials for clients to pick out the finer points of their kitchen project. As well as being able to view designs on screen and in virtual reality” – Stefan Brown*

### The kitchens

Crown Imperial has been manufacturing kitchen and bedroom furniture in Britain for over 75 years. A family business renowned for premium quality and innovation, they are the perfect partner for The Kitchens Inc.

They also have an impressive local showroom just ten minutes from Dunchurch. The Kitchens Inc have exclusive, appointment only access to this incredible facility, featuring more than 50 displays, over two floors.


*“People often like to see more than we can possibly display. Walking our clients around the Crown Imperial showroom gives them a much more comprehensive look at the options” – Siobhan Fay*

See opposite for The Kitchen Inc’s contact details.

**THE KITCHENS INC**  
WARWICKSHIRE, ENGLAND

kitchens on the square

# Opening in September



Promotional rates for  
residents of Dunchurch  
& the surrounding  
villages

The Kitchens Inc are coming to the beautiful village of Dunchurch.

In 2018 we opened our design studio in Royal Leamington Spa, and since then we've gone from strength to strength. Designing and installing kitchens all over Warwickshire.

We offer high quality British made kitchens, premium brand appliances and luxury surfaces. Designed by our small team of experienced designers and installed by our highly skilled local tradespeople.

Pop in and speak to Stefan or Siobhan to arrange a FREE home survey or design appointment, or simply give us a call on 01788 220 206

The Square | Dunchurch | CV22 6NU | 01788 220 206 | [info@thekitchensinc.co.uk](mailto:info@thekitchensinc.co.uk) | [thekitchensinc.co.uk](http://thekitchensinc.co.uk)

# Dunchurch Parish Council

**By Gill Peacock, Parish Clerk**



I am now back working at the library on Tuesday and Thursday mornings, although I still work from home a good bit of the time. Please get in touch if you would like to arrange a face to face chat or if I can help in any way. If you want to contact a Dunchurch PC councillor direct, their email addresses are on the DPC website at [www.dunchurchpc.org/download-category/declarations-of-interest/](http://www.dunchurchpc.org/download-category/declarations-of-interest/) or just contact me.

One of the most significant tasks that the DPC looks at each week is a variety of planning applications and the Dunchurch PC responses can be seen to each application within the boundaries of Dunchurch via the minutes on the DPC website and the Rugby Borough Council Planning Portal <https://planning.agileapplications.co.uk/rugby/search/applications>

I have received a planning application for the creation of a watercourse and associated landscaping for the land north of Zone C – land north of Coventry Road, Thurlaston. See application number R22/0719 on the RBC planning portal.

Dunchurch Parish Council is trying to resume work on creating a Neighbourhood Development Plan (NDP) and would love to have more people involved. If you can assist in one of the

areas that you feel enthusiastic about for a couple of hours every month, please contact me. When the NDP is adopted by Rugby Borough Council, it will be classed as a material consideration, which means that when planners consider all planning applications, they must take more notice of what DPC says!

Unfortunately, the DPC received the resignation of Paul Le Poidevin recently and we would like this opportunity to thank him very, very much for all his hard work and dedication and wish him well in his future endeavours. Dunchurch PC is now short of councillors, so if anyone is interested in working to enhance the community in Dunchurch, please give me a call and we can have an informal chat.

Finance is also an important priority for the DPC, and full details of income and expenditure can be found on the council website <https://dunchurchpc.org/agendas-and-minutes.php>

If you notice a blocked drain, damaged footways, overhanging branches/trees, or a pothole, you can report it and lots more by using a simple online system [www.fixmystreet.com](http://www.fixmystreet.com) which allows you to pinpoint the exact location and nature of the problem and forward the issue on to the relevant organisation to sort out.



Dunchurch PC has been very busy with various projects over the last few months, including:

- asking the WCC lighting team to replace the three French ornamental columns which need repair on Rugby Road and Stocks Green with the columns we asked them to save once the redesign of Dunchurch Crossroads had been completed.
- instigating the renovation of the Stocks and several benches
- asking BT to paint the telephone box on The Green (thanks to councillor Ian Grogan)

### Dunchurch Parish Council Community Grants

Applications for the Parish Council community grants are invited from community organisations in Dunchurch.

Applicants must be not for profit organisations with a constitution and a bank account, and which publish their accounts, where applicable. The grants applied for should show a benefit mainly to the residents of Dunchurch parish. Applications not conforming to these criteria will not be considered.

Please obtain an application form (which explains the criteria in more detail) from the Clerk, Gill Peacock: email: [clerk@dunchurchpc.org](mailto:clerk@dunchurchpc.org) or you can download a copy from <https://www.dunchurchpc.org/download/dunchurch-parish-council-grant-application-form-2022/> Applications will be considered at the next DPC meeting following receipt of the forms.

- instigating the resurfacing and 'H' Bar markings in Done Cerce Close to assist residents, mainly due to poor and inconsiderate parking at school times. The 'H' Bar markings have been paid for by DPC.
- looking at the installation of bike racks in The Square car park.

The judging dates for Britain in Bloom have just passed, and DPC conducted a number of projects, which will make the village of Dunchurch an attractive and pleasing place to live and work. You may have noticed that the thatched bus shelter is looking splendid, as does the newly cleaned Lord John Statue (see page 8). DPC also paid for two hanging basket brackets on each of 16 lamp columns on the judging route following confirmation that the contractors for the Dunchurch Crossroads development were not going to supply or pay for them.

We would like to take this opportunity of thanking FODS for their exceptional and arduous work in making Dunchurch look so beautiful.

Dunchurch PC meetings are generally on the second Monday of the month and the next ordinary meeting is on 12th September 2022.

Clerk: Gill Peacock, 01788 817550 or 07474 705061 [clerk@dunchurchpc.org](mailto:clerk@dunchurchpc.org)  
Chair: Tracey Price, [tracey.price@dunchurchpc.org](mailto:tracey.price@dunchurchpc.org)  
[www.dunchurchpc.org](http://www.dunchurchpc.org)

## Dunchurch Festival Group

By Rob Collings

**Y**outh Ambassador After last year's success, the DFG have appointed a new Youth Ambassador to represent them and the village of Dunchurch at various events throughout the year. The new Youth Ambassador is Sophie Thomas.

In her application, Sophie – aged nine – said she wanted to make Dunchurch a 'happier and prettier place to live in with more flowers and wildlife.' Sophie is an active member of the village attending a local school, other village groups and has an allotment. Sophie's duties will include giving away thousands of pounds raised by the DFG and turning on the Christmas lights in the village. Congratulations Sophie. We look forward to working with you.

**Fete Day** We held our annual fete on the 26th of June. There was a concern regarding the weather but the closer the day came, the better the outlook. Fortunately, the sun shone and people came in their droves. There were the usual trade stalls and many varied village stalls as well as favourites like alpacas, ferrets, singers and dancers and the ever popular dog show. As well as opening



*Sophie – DFG Youth Ambassador*

the fete, Youth Ambassador Sophie had a stall giving away wildflower seed bombs.

The parade started opposite the Dun Cow and made its way to the sportsfield field where the fancy dress was judged by

Sophie and the MC for the day, Nick Jones. Various singers and bands played throughout the day including the Dunchurch Band and the Sambassadors of Groove. The dog show included categories (or should that be dogatories) like waggiest tail



*Fete Day canine fun!*

and best fancy dress. Refreshments were available from Gail's tearoom, the famous DFG BBQ and the bar. Admission was once again free and by the look of it, everyone had a fantastic time. The event raised a total of £7,710.79. This will go to local good causes in the village.

Over the last few years, the DFG has given away tens of thousands of pounds

allowing the groups who received donations to do wonderful things by helping those living in and around Dunchurch. Thanks to all who helped put on this fantastic annual event, to those who donated raffle prizes and a big thank you to all who attended and made this the big event in the Dunchurch calendar. As well as the fete, the DFG holds many functions at the village hall throughout the year. For more information check out our Facebook page or go to [dunchurchevents.org](http://dunchurchevents.org).

### A message from the committee

After ten years at the helm, Rob Collings has decided to step back as chair of the DFG. He will continue to be on the committee, help at functions and do all he can around the village. Rob has loved being part of this group, the good friends he has made, the fun he has had and looks forward to still being part as



a helper. All those who know Rob will know how hard he has worked and we send our very best wishes to him and our unending thanks.

## In Memory of Brian Forbes

Brian's bench is now located on the Memorial Green and very close to the home he loved and lived in for many years. Delivered and installed by RBC Parks Department, the bench was funded by donations from his many friends in Dunchurch and from around the world.



*Brian, a truly wonderful character of this village and a much missed 'guy'. Photo: Barrie Lambert*

## Little Princess Trust

**W**e were delighted to receive this message from Gracie and wish her well with her selfless fundraising efforts.

'Hi, my name is Gracie. I am 11 years old. I grew my hair for three years so I could donate it to the Little Princess Trust. I always get comments on how beautiful my hair is and this inspired me to share it with a child who is suffering from cancer so they can feel special and beautiful too. I had 34 cms cut from my hair into nine ponytails on 7th July at Patrick Ryan Salon ready to donate. I aimed to raise £550, the cost to make one wig, but have managed to raise over £800 so far thanks to everyone being so generous. The page is still open for donations following this link. Thank you for all the support.'

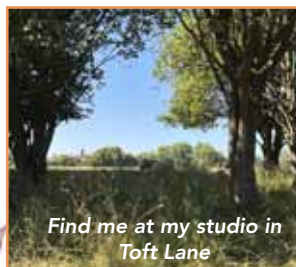


*From top: Before; creating the nine ponytails; the big cut; hair ready to donate; plenty left after!*

## Jane Archer - Artist

Original watercolours, prints, cards, cushions and mugs.

Contact me for an appointment to visit the studio, or to discuss details of classes and workshops restarting in September.



[janearcher8@gmail.com](mailto:janearcher8@gmail.com)



Jane Archer Artist



@janearcherartist

[www.janearcherart.co.uk](http://www.janearcherart.co.uk)



## Dunchurch Sportsfield and Village Hall

The Trustees have installed this smart, new sign at the main Rugby Road entrance of the village hall and a new outdoor notice board should be added from November.

### Dunchurch and Bilton Cricket Club

You may have noticed the new practice cricket nets installed on the village sports field. These were the culmination of an



11-month project carried out in conjunction with the Village Hall Trustees.

The cricket club would like to thank its members for their hard work and fundraising efforts as well as the financial support from, Dunchurch Parish Council, Dunchurch Festival Group, Dunchurch Sportsfield



*The new practice nets*



and Village Hall, the Arnold Clark Community Fund and the Charities Trust. Without their generous support, this project would not have been possible.

The club is now looking to expand with a women's XI, so if anyone is interested in playing cricket for their local village club, please get in touch at [dunchurchbilton.play-cricket.com](mailto:dunchurchbilton.play-cricket.com).

### Dunchurch Football Club

Hot off the press! By the time you read this, new moveable goal posts may have been installed. These were previously used by Coventry City Football Club and anonymously donated to Dunchurch by someone connected to the club. Made from plastic, they will be much safer to use than the old metal ones.



## Warwickshire Libraries Home Delivery Service

- **Enjoy reading books or listening to audio books?**
- **Finding it difficult to get out and about?**
- **Missing your visits to the library?**
- **Our Home Delivery Service staff and volunteers could bring books to your door.**

If you love reading but are unable to get to a library then find out how we can help by contacting the Home Delivery and Mobile Library Service on **01926 851031** or online at **[www.warwickshire.gov.uk/homelibraryservice](http://www.warwickshire.gov.uk/homelibraryservice)**

or email **[mobilelibraryservice@warwickshire.gov.uk](mailto:mobilelibraryservice@warwickshire.gov.uk)**

Don't forget that your library card also gives access to free Ebooks, EAudio, ENewspapers and EMagazines and much more all from the comfort of your home, go to:

**[www.warwickshire.gov.uk/libraries](http://www.warwickshire.gov.uk/libraries)**

# Dunchurch Allotment Association

By Paul Sanders

‘What gets done stays done’ says my allotment buddy as he discusses the tasks he has just undertaken in January. In July, the time I am now writing, it’s more like ‘What gets done is soon undone.’ I have just spent half a day weeding the various vegetable beds and I know that within a week with the mixture of sunshine and showers I will have to start all over again. As I pursue the meditative process of pulling out the weeds. I find myself pondering on the unwanted plants competing with my vegetables. Fat hen is easily uprooted and does not snap, chickweed is quick to grow and can be grasped by the handful, but deep rooted dandelion requires digging. All three of these weeds have been used as edible plants for humans and the first two, as their names suggest, fed to poultry

In the last few years new weeds never seen on my allotment have made an appearance. Creeping thistle with its long tap root followed by horizontal side

roots means that an individual plant later gets surrounded by younger plants as the deep underground lateral roots spread out radially. The seed was most likely parachuted in last year, born on a late summer breeze.

As an allotmenteer walks past, I practise as lots of children do, lightly casting a strand of sticky-bob stem onto her back and smile as I imagine this being pointed out when she meets with friends. Cleavers is the name given to this weed; its stem and seeds are covered in tiny hooks which aid seed distribution and climbing up other plants. Cleavers is a weed which can very quickly overwhelm untended areas. Interestingly, poultices and washes made from cleavers were

traditionally used to treat a variety of skin ailments, light wounds and burns.

Without doubt my most troublesome unwanted plant is bindweed. It is also one I have grudging respect for as it just keeps popping up. Hedge bindweed



*Cleavers – a familiar weed, ripe for childish pranks but with traditional medicinal uses*

(*Calystegia sepium*) (left) with its pure white trumpet flowers is a familiar sight, choking plants in borders and twining around any plant shoot or cane. Its perennial spaghetti like roots are usually white and brittle and if broken are able to regenerate from the smallest sections. Field bindweed (*Convolvulus arvensis*) (below) has only recently invaded my asparagus bed and here the roots grow vertically down making this weed particularly troublesome as I'm reluctant to disturb the asparagus crowns.



I am often asked how I disposed of these most persistent and regenerative of unwanted plants. For most weeds it is fine to compost but avoid including seeds. For those weeds that regenerate from even the smallest of root pieces, for example bindweed, my method is to store in a black, light excluding bag for a couple of years. By this time the plant will have rotted to make a rich compost with no trace of the original nuisance.

The Allotment Association will be producing a gardening calendar for 2023. If you would like to suggest any short



gardening tips for inclusion in the calendar, please send them soon to [admin@dunchurchallotments.org.uk](mailto:admin@dunchurchallotments.org.uk).

## THE ALLOTMENT ASSOCIATION GARDENING WALL CALENDAR FOR 2023.

Beautiful illustrations

Large format

Full page for  
each month

Full of useful  
tips and  
interesting facts  
for all gardeners

Available October – Order  
yours now by emailing [admin@dunchurchallotments.org.uk](mailto:admin@dunchurchallotments.org.uk)





## Cycling group recreates historic picture

By Rob Collings

**R**ecently, a Rugby cycling group met at the Dun Cow pub to celebrate their 1,000th ride and a club member came up with the idea of recreating this photograph taken in 1895. Members turned out in period costume, some even on old bicycles to match the outfits. They went on to tour around many local villages calling in for refreshments at a few other pubs, largely due to the hot weather and the tweed costumes not normally worn by cyclists today. One of the group leaders, Matt Emery, thanked the 30 plus cyclists who turned up for the event, especially those in period costume on such a hot day.

The Rugby 2-Wheelers club was formed by Graham Hedges in 2014 and it has over 130 members. It is a social group for people of moderate fitness and they are often seen riding the highways and byways around the Rugby and Dunchurch area. If you love cycling



*Spot the difference: Coventry and District cycling club, 1895, and the Rugby 2-Wheelers 2022*

through the countryside, chatting, coffee breaks and the occasional pub stop, then this could be the club for you. The group usually cycles at least 35 miles at around 15–17 mph on a Saturday and Wednesday morning but has other evening rides and social functions, and has many Dunchurch members in their ranks.

For more information, find Rugby 2-Wheelers on Facebook.




# SOLSTICE

COFFEE SHOP & NURSERIES



Open Tuesday to Saturday: 10-4pm  
Sunday: 10.30-4pm



Coventry Road, Dunchurch, CV23 9JR  
01788 711797  
solsticecoffeeshopandnursery 



## Bike gathering dust in the garage or in need of repair?

Check out our website for all cycle maintenance and associated repair services!

Our mobile service means no more bike shop hassle, our "Cytech Registered" mechanic will collect from you, carry out the work in our workshop and redeliver within an agreed time period.

We are a local service provider and only operate within a 10 mile radius of Dunchurch.

For further details go to:

[www.dunchurchcycle.co.uk](http://www.dunchurchcycle.co.uk)

Or call/text: 07831499697

Look forward to hearing from you, Martin

*Note: We also repair/service mobility aids etc..*

## WE GET TO KNOW YOUR TEETH, PERSONALLY.



We all know how important our teeth are to health and confidence. Courtyard Dental offers a pure and uncomplicated service for all the family. And because we understand how people can feel about going to the dentist,

we provide it in a welcoming and reassuring environment. We are an independent practice, and because we perform all the work, including hygiene, we really get to know your teeth. Why not call us today.



**COURTYARD**  
FAMILY DENTAL PRACTICE  
WE KNOW YOUR TEETH. PERSONALLY.

01788 519 831 alexia@courtyard-dental.myzen.co.uk r/o 4 Daventry Rd, Dunchurch, Warwks. CV22 6NS

## Dunchurch Pantomaniacs

By **Paul Le Poidevin, Director**

**A**fter missing two years due to the Covid pandemic, Dunchurch Pantomaniacs are looking forward to resuming performances in January 2023.

Sue Protheroe had written a new panto, *The Pie-Rats of Penzance*, for 2021 and we now look forward to bringing this to the stage early next year.

Principle part auditions will take place on

Sunday 25th

September 2022 starting at 10am.

Anyone wishing to join the chorus does not have to audition and are welcome to come along and take part. The first chorus rehearsal is on Tuesday 1st November 2022 at 7pm.

Please contact Paul ([paul.lepoidevin@btopenworld.com](mailto:paul.lepoidevin@btopenworld.com)) for more details.



## Dunchurch Post Office

**F**or the past few years, our village post office has been in the careful hands of Sandie who has now moved on to pastures new and can be found managing the Social Club where she applies the personable approach that we all know and love.

Meanwhile, the post office is now under new ownership and a warm welcome awaits visitors. Kam, a working mum of three children has been in retail for the past 27 years since beginning work at 18. A previous owner/manager of four businesses, Kam is looking forward to a new challenge and has plans to develop the shop into

a village store, stocking the top hundred items including confectionary and groceries. A refit is to follow including chillers and possibly, the repositioning of the counter. However, the post office will remain central to Kam's business.

When visiting, don't be surprised to meet Sarjan, Kam's seven-year-old son, who sees himself as the new manager. Keen to help his mum, he freely offers advice on the latest bargains and products to those who pop in!

We send a warm welcome to Kam and her team and our very best wishes for a long and profitable association with Dunchurch.



## The Dunchurch Oak Line

**By Mike Judge, Dunchurch Sportsfield & Village Hall Trustee, and Oak Line Organiser**

**T**he Dunchurch Oak Line is alive and thriving in its new home – The Heath Green, adjacent to the magnificent Dunchurch Beacon. The young trees are already looking established and putting on new growth. The vertical support stakes have been supplemented by stakes hammered in at 45 degrees and along with improved ties allow adequate movement to strengthen the tree whilst ensuring it grows upright. A bark mulch has been added at the base of each tree to retain as much moisture as possible, especially during the dry and record-breaking temperatures experienced this year. Fortunately, our loyal watermen, Rob Collings, Phill Freeman, Keith Brushett and Dave Watson have been out checking on the health of our trees and watering them, sometimes twice a day. Many thanks are due to them and others who check the Line regularly.

The trees are quickly establishing themselves as a major feature and whether viewed from Tree 1, at the Waring Way end of the Line or Tree 10 at the village centre end, the trees already demonstrate the lovely sweep of the crescent we planned. This complements the existing trees that also follow the line of the footpath and over the years, a wonderful avenue of trees will emerge.

Thanks are due to our terrific sponsors, all of whom stuck with us after the initial set-back, and to our col-

laborators, FODS, who helped to bring this project to fruition. The Dunchurch Oak Line is a wonderful commemorative project celebrating Her Majesty's 70 year reign, supporting not only 'The Queen's Green Canopy' but, is hopefully a valuable contribution to the FODS entry to the RHS Britain in Bloom 2022 competition and also supporting the village's nomination as the representatives of the Midland Counties in the Large Village category against entries representing the rest of the country. A great honour to have been thus selected in their first year of operations!

The book telling the story of 'The Dunchurch Oak Line' is currently being compiled with photographs of notable trees in the village (courtesy of Eric and Jane Ewington) and text being produced as quickly as my single finger typing can go! We hope to make it available for everyone to see in the library in due course.



*Mike Judge at the planting of the Dunchurch Oak Line*



## Rugby Webb Ellis 41 Club

By **Jeremy Davenport**

**41** Club is the shorter name for 'The Association of Ex-Round Tablers' Clubs' and it forms part of The Round Table family. It is a social and networking organisation for men over forty-five years of age who were usually former members of Round Table. However, prior membership of Round Table is NOT a requirement for membership of the 41 Club.

Formed in 1989, our club is one of 725 similar clubs in the UK/Eire with 14,500 members in 28 countries.

Formed in 1975, Webb Ellis Round Table has a history of fund raising for local charities and were the founders of the Spring Fair held at the recreation ground in central Rugby and the annual Gala Nights at the Benn Hall. Many previous project based activities include a play area for a school with pupils of complex needs, fitting safety door locks to homes of pensioners and transporting locals to Sport for the Disabled activities at the Sports Centre every Saturday.

Webb Ellis 41 Club has continued this tradition in donating a significant sum to the Anthony Nolan Bone Marrow appeal.

Our Club meets once a month, usually in the evening, in and around Dunchurch. We have a varied socially based

programme such as speaker meetings, sporting/games events, dining occasions, treasure hunt, quiz and an annual summer BBQ! Our partners also join us for many of these events.

Would you be interested in becoming a member of our Club? If so, why not come along to one of our meetings? We would be delighted to meet you and promise a very warm welcome.

For details of our next meeting, please contact our Club Secretary, Elliott McGlone, by email at [elliottmcglone@icloud.com](mailto:elliottmcglone@icloud.com).



### Blooming Lovely!

Surely, the approach to Paul and Wendy Mushing's front door must be one of the prettiest in the village. The entire front garden is packed full of colour with flowers that Paul has grown from seed and the result is stunning.

We wish them every success as first time entrants into Rugby in Bloom.



FLOWERS FOR ALL OCCASIONS

# Anne-Marie's Florist

61 The Square | Dunchurch | Rugby | Warwickshire | CV22 6NU



Why don't you treat yourself once a month to quality seasonal flowers delivered to your door or treat a friend!

Perhaps a gift idea for a birthday or for Christmas?

If you or your recipient live locally we offer a monthly service of fresh flowers delivered free of charge.


**Contact us today for a quotation and package rates.**

**Packages to suit all budgets!**

**Established for 35 years and situated in the heart of Dunchurch village**

Email: [amflorist1@outlook.com](mailto:amflorist1@outlook.com)

 [www.facebook.com/AnneMarieFlorist](https://www.facebook.com/AnneMarieFlorist)

 [anne\\_maries\\_florist\\_dunchurch](https://www.instagram.com/anne_maries_florist_dunchurch)

**01788 521 881**

[www.amflorist1.wixsite.com/website](http://www.amflorist1.wixsite.com/website)

## Dunchurch Social Club



- Open to the public and welcomes families
- Two function rooms available to hire free of charge
- Beer garden

The Square, Dunchurch, Rugby CV22 6NU

Tel 01788 811177



Follow us on Facebook for up-to-date promotions and events

## Doctors in Dunchurch, Part 15: The Noughties

*By Dr Ian Czerniewski, Dunchurch GP since 1991 and Dr John Airlie Hunter, Dunchurch GP 1963–1998*

With Dr Carne's departure in 2006, Dr Sam Chesser joined the partnership. Dr Chesser trained and worked in Leeds, has a strong medical family background, and had experience of the frustrating world of NHS management. He also brought experience of minor surgery which he continues to perform.

The team had changed over the years and only four members of the 1995 practice picture in part 9 were still at the practice in this picture in 2006.

Dr Eileen Berridge was the first salaried GP at the Practice working on a sessional employed basis for over ten years, providing child health clinics as well as general medical services to a loyal following of patients.

The national arrangement of GP services was revolutionised by a new GP contract in 2004. Core duties of GPs were defined, and more emphasis was placed on systematic screening and monitoring of several common medical conditions such as asthma and diabetes, which has undoubtedly led to improved outcomes in these conditions.

At the end of the noughties, in 2009 the global swine flu pandemic threatened to cause havoc, but thankfully receded. Dr Chesser was called to a potential outbreak in Dunchurch and dealt with and examined several patients and carried out swabs while donning gloves, apron and face mask. This was a novelty at the time but of course, turned out to be the forerunner of a much greater threat.



Standing: Mrs Caolyne Hyndman (Practice Nurse), Mrs Margaret Whitfield (Receptionist), Mrs Carolyn Watts (District Nurse), Dr Eileen Berridge (salaried GP), Mrs Marilyn Greenwood (Receptionist), **Dr Kate Reynolds (Partner)**, Mrs Janice Wright (Receptionist), Mrs Jacqueline Rushbrooke (Health-care Assistant), Mrs Sue Evans (Practice Manager), Dr Liz Roberts (Partner), **Mrs Gayle Cigdem (Senior Receptionist)**, Mrs Valerie Hiddleston (Housekeeper), Mrs Jenny Blackman (Secretary), (inset) Mrs Helen Pilley (Practice Nurse). Front row: Mrs Margaret Wearn (Secretary), Dr David Carne (Partner), **Dr Ian Czerniewski (Partner)**, **Dr Sam Chesser (Partner)**, Mrs Karen Nottage (Receptionist). (Names in bold are still at the practice in 2022.)

# Wombles Wheels

EXCLUSIVE PRIVATE HIRE

9 YEARS EXPERIENCE • CRB CHECKED

**07979 032 068 or  
01788 811 723** (9am - 5pm)

Email: [robin.woerner@hotmail.co.uk](mailto:robin.woerner@hotmail.co.uk)

***Need to  
get to the  
airport?***

**AIRPORTS • CRUISES • DAY TRIPS • THEATRE TRIPS  
CORPORATE BUSINESS WELCOME**

*R. Woerner Trading as Wombles Wheels, specialises in long  
distance work but short trips can be considered.*

## Dunchurch Sportsfield & Village Hall

For  
Hire

Dunchurch Village Hall and its facilities can be hired  
for a variety of events - from Community Groups,  
Fundraising Events & Public Meetings to Weddings,  
Parties and Family Functions

The facilities briefly comprise of:

- Capacity in Main Hall - 160 Theatre Style  
or 130 seated at tables
- Main Hall has permanent stage, adjustable lighting,  
fully equipped sound system with hearing loop
- Separate meeting room and a lounge, club annexe &  
sportsfield including changing rooms
- Modern kitchen/bar - licence available
- Main Hall air-conditioned. Other rooms centrally  
heated
- Disabled facilities & double door access for loading
- Set in landscaped grounds with 70 car parking  
spaces, including disabled



For further details please contact us or visit the website:

Tel: **01788 522444**

Email: [jane.bookings@dunchurchsportsandvhall.co.uk](mailto:jane.bookings@dunchurchsportsandvhall.co.uk)

Web: [www.dunchurchsportsandvhall.co.uk](http://www.dunchurchsportsandvhall.co.uk)

**Rugby Road, Dunchurch CV22 6PN**



THE  
RUGBY FLOOR COMPANY

DUNCHURCH SHOWROOM

*open by appointment*

**01788 815700**

PARQUET | WOOD | KARNDEN | LAMINATE | RENOVATION



*Beautiful floors for beautiful homes*

3C SOUTHAM RD | DUNCHURCH | CV22 6NL



## School News – Community at Heart

By Joss Andrews, Executive Headteacher



Our focus this issue is on the spirit and impact of community – within school, across Dunchurch and beyond to our global community.

Over the past year, we have been able to re-connect on all levels. With the previous two years being so heavily impacted by the pandemic, it has been highly rewarding to support our pupils and families by broadening their experiences again, allowing our community to develop.

Within school, children have been able to mix with their peers again, collaborate with children from different year groups, attend trips and visits and to become more aware of the wider impact positive relationships can have on their learning and on themselves as human beings.

We have been fortunate to be supported by many incredible volunteers so our pupils have been able to experience life in Dunchurch once again. Our nursery children's weekly attendance at the Dunchurch

library, all pupils visiting St Peter's for a special Easter service, our support projects for refugees at Dunchurch Park, as well as winning 'best dressed' at the Dunchurch fete in June, ensured our children and families were able to celebrate in all that Dunchurch has to offer and to give a little back to those in need of support.

Further afield, our school has connected with a range of other communities – sporting events allowed us to compete in local and regional finals, and teacher-led projects have enabled us to link with, and provide support for, refugees in Calais, and to send books to schools in Africa. These opportunities have allowed our pupils to demonstrate our Christian values and provide support and love to all.

We have now arrived at the start of a new academic year, and with every new start there is always a feeling of anticipation and excitement across the school. With much change over the past few months, we are looking forward to welcoming new teachers and pupils to both schools and seeing them enjoy the developments we have made to the outdoor environment at each site, as well as within the classrooms.





## UNION CANAL CARRIERS LTD

Union Canal Carriers aims to set standards that few hire fleets can match. Because we are as enthusiastic as ever about "canaling" and have over 50 years hiring boats on the "cut" you know that you are in safe hands and can cruise with confidence.



### Holiday Boat Hire



#### You can hire this boat for a day

For up to 12 people

Ouzel II is fully equipped with a galley, sink, gas hob, toilet, seating for 12 & buoyancy aids on request.

#### Great value! Great fun!

No experience required, Instruction given

Choice of scenic routes

Ideal for family or other social occasions

Have a canalside picnic or lunch in a pub

**Monday - Friday £150.00 incl**

**Weekends / bank holidays -**

**£195 incl**

**Telephone 01788 890784**

Union Canal Carriers, Braunston Pump House, Dark Lane, Braunston, Northants NN11 7HJ

Tel: **01788 890784** Email: [info@unioncanalcarriers.co.uk](mailto:info@unioncanalcarriers.co.uk) Web: [www.unioncanalcarriers.co.uk](http://www.unioncanalcarriers.co.uk)



Follow us on Facebook



Follow us on Twitter

## PEST CONTROL

### IAN GALL PEST CONTROL

*Local & Independent*

Home and Large Scale control of:

- Moles
- Rabbits
- Wasps
- Fleas
- Ants
- Bed Bugs
- Rats
- Mice



Telephone:

**07764 407749**



**Facebook/iangallpestcontrol**

**[www.iangallpestcontrol.co.uk](http://www.iangallpestcontrol.co.uk)**

## Cordwood Tree Services



### Cordwood Tree Services

Professional tree and hedge care

- Reducing and pruning
- Crown lifting
- Thinning and deadwood removal
- Full tree removal
- Pollarding
- Felling / Vegetation clearance
- Hedge reductions and trimmings
- Chipping service

Tel: 07377717509

Email: [cordwood\\_treeservices@outlook.com](mailto:cordwood_treeservices@outlook.com)



## Friends of Dunchurch Society Neighbourhood Watch Scheme

In association with Rugby Borough NHW Scheme



### Do you suffer from password headaches and confusion?

**P**asswords are very important if we are to stop criminals gaining access to our affairs, especially our finances, so it is not surprising that they cause many a headache and much confusion.

Criminals use software to try to guess your choice of password and this software can try many thousands of different passwords in a matter of seconds! But the software requires some initial information about you provided by the crook. This could be things like family names, interests, pastimes, personal dates, workplace information and so on.

Not so long ago it was recommended that people should use passwords containing complex combinations of upper and lower case random letters, numbers and symbols, and that having a different one of these complex passwords for each of your sites was essential. No wonder so many people have suffered from the afore-mentioned headaches and confusion!

Although such complex passwords do indeed generally provide the required protection, research has shown that such complexity is not necessary! All you need are **three random words**!

This is what you do to fool the criminals' password searching software. You literally choose three random words and connect them together to make the password. For example your words might be 'stone', 'cot' and 'tulip' so your password would be stonecottulip. You could add capital letters, numbers or symbols if you want, but research has shown that this is not necessary!

**Caution:** the words you choose must be truly random and have no link whatsoever with each other or you, your family, your work, interests etc.

Three words are easy to remember and you could even write them down provided you didn't link them in any way to your accounts. In a complex world, how nice to have something simple but effective and free(!) for a change.

For more detail see [www.ncsc.gov.uk/blog-post/the-logic-behind-three-random-words](http://www.ncsc.gov.uk/blog-post/the-logic-behind-three-random-words) This is a UK government website (ncsc = National Cyber Security Centre) and if you have any doubts we strongly recommend that you visit this site. We certainly cannot accept responsibility for any accounts that might be hacked in the future!



Blossom Cottage Beauty  
Wharf Farm  
Kilsby Lane  
Rugby  
CV21 4PN



07957 670070

@blossomcottagebeauty

Come and take some time out for yourself at Blossom Cottage.  
A relaxing rural, waterside location with free onsite parking.  
I provide a friendly and welcoming atmosphere.



*My ethos . . .*

*"Beauty therapy should not be just about the treatment,  
it is about the whole experience".*

*Amanda Reynolds*

We offer a wide variety of massages and beauty therapy  
treatments at competitive prices using quality products.



[www.blossomcottagebeauty.co.uk](http://www.blossomcottagebeauty.co.uk)

## Rheams (Plumbing and Heating) Limited

Tel. 01926 428752

*FAMILY RUN BUSINESS ESTABLISHED IN 1967*

- GAS SAFE REGISTERED ENGINEERS
- 24 HOUR CALL OUT SERVICE,  
7 DAYS A WEEK
- RUGBY BASED ENGINEERS
- FREE INFORMATIVE CONSULTATIONS
- LARGE/SMALL SCALE RENOVATION
- NEW BUILDS
- BOILER REPLACEMENTS/REPAIRS  
(natural gas, LPG and commercial)
- LANDLORDS' CHECKS
- POWERFLUSH SERVICE
- BATHROOM INSTALLATIONS
- ALL GENERAL PLUMBING

[www.rheams.co.uk](http://www.rheams.co.uk)

email: [info@rheams.co.uk](mailto:info@rheams.co.uk)

# Wanda Fashions



[WandaFashions@TheGreenDunchurch](mailto:WandaFashions@TheGreenDunchurch)

The Old Bank House, The Green, Dunchurch CV22 6NX  
T: 01788 522021 E: [paula@wandafashions.com](mailto:paula@wandafashions.com) [www.wandafashions.com](http://www.wandafashions.com)



## St Peter's Churchyard

We have received complaints about walkers allowing their dogs off the leash in St Peter's churchyard contrary to prominent notices requesting otherwise. Not only are loose dogs disrespectful to those who wish to tend family graves or have some quiet time in contemplation, but dog mess is unpleasant for all and especially for the volunteers who cut the

grass. There have also been cases of loose dogs damaging headstones.

Please respect the churchyard rules. You are welcome to walk your dog in the churchyard but please keep them on a leash and take any mess away with you. Thank you for your co-operation.



## A Celebration Concert of Music

**Saturday 1<sup>st</sup> October 2022**

**at St Peter's Church Dunchurch**

**to commemorate the 50<sup>th</sup> anniversary  
of the recently restored church organ**



**Including**

**Local school choirs • Dunchurch Voices**

**Rugby Male Voice Choir • The Espresso Quartet**

**Jayne Dalley-Hewer (soprano) • Richard Copeland (Organist)**

**Doors open 6.30pm for 7.00pm start**

**Cash bar and Raffle**

**Tickets £10 (adult) includes a glass of sparkling wine or soft drink  
and celebratory cake**

**£5 (ages 12 to 18) Children under 12 free**

**Available from Wanda's, Dunchurch Post Office and on the door  
(subject to availability)**

**All proceeds will go to St Peter's Church**



VISIT AND ENJOY

# Historic Dunchurch

Heart of England in Bloom Gold winners 2019-2021

Finalists in Britain in Bloom 2022

*Village shops and businesses look forward to welcoming you*



**SPAR – Dunchurch  
Service Station**  
Coventry Rd  
01788 814770

**Dunchurch  
Post Office**  
Southam Rd  
01788 819951

**Rowlands  
Pharmacy**  
The Square  
01788 814770

**Ann Marie's  
Florist**  
The Square  
01788 521881

**Lucy Locket  
Hair Salon**  
The Green  
01788 813718

**Wanda  
Fashions**  
The Green  
01788 522021

**Soft Furnishings  
by Mickie**  
The Square  
01788 813334

**Carter & King  
Estate Agent**  
The Square  
01788 550066

**Courtyard  
Dental**  
Daventry Road  
01788 519831

**Fosse House  
Gallery**  
Coventry Rd  
01788 877077

**Mops  
Hair Studio**  
Coventry Road  
01788 810452

**Truly Scrumptious  
Nail & Beauty**  
The Square  
01788 815113

**ANew Aesthetics  
Beauty Salon**  
Southam Road  
01788 817070

**Rugby Flooring  
Co**  
Southam Road  
01788 815700

**The Cake  
Gallery**  
Southam Road  
01788 522299

**Patrick Ryan  
Hair Salon**  
Southam Rd  
01788 521315

**Birth  
Boutique**  
Southam Road  
07842 643409

**Dunchurch  
Barbers**  
Southam Road  
07508 440664

**Rugby Rd  
Newsagents**  
Rugby Rd  
01788 810422

**Solstice Nursery  
and Cafe**  
Coventry Road  
01788 711797



Sponsored by



**DAVID WILSON HOMES**

WHERE QUALITY LIVES



# Where to eat in Dunchurch

*Pubs, restaurants, take-aways and coffee shops – the choice is yours*

**Dunchurch Fish Bar Takeaway**  
Southam Rd  
01788 815058

**The Green Man Public House**  
Daventry Rd  
01788 810210

**Huntsman Carvery Restaurant**  
The Square  
01788 811748

**The Dun Cow Public House**  
The Square  
01788 810305

**Cinnamon Lounge Indian Restaurant**  
The Square  
01788 812855

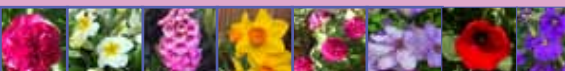
**Malancha Indian Restaurant**  
Daventry Road  
01788 819141

**Dunchurch Pizza Place Takeaway**  
Southam Road  
01788 810000

**Crystal Chinese Takeaway**  
Southam Road  
01788 812888

**Dunchurch Social Club**  
The Square  
01788 811177

**Square Coffee Coffee Shop**  
The Square  
07816 278409



## Wine Tasting Evenings @GALLACHERS



Fancy a wine tasting evening?

We hold a tasting evenings each month, they always involve wine and sometimes cheese!

A great way to explore new wines in a fun, social and relaxed way.

Visit our website for event dates

.....  
*We offer private/corporate tasting events too.  
Contact us to discuss.*  
.....

Wine bar & shop open

Weds 12-5.30/Thurs 12-7  
Fri 11.00-11.00, Sat 11-6.00

**Gallachers Wine Merchants**  
Regent St. Rugby

[www.gallacherswinerugby.co.uk](http://www.gallacherswinerugby.co.uk)

Tel: 01788 368543

@gallachersofrugby #gallacherswine  
Shop. Tasting. Bar

Sponsored by



**DAVID WILSON HOMES**

WHERE QUALITY LIVES

## Dunchurch Baptist Church

*By Eleanor Holdsworth*

**W**e hope you've had the chance to come in and see the beautiful new Dunchurch Baptist Church building on Coventry Road. It's been a long process, but we're thrilled to be using the new premises, and very grateful for all the support we've had from everyone in Dunchurch. And now that we're settled in, we're so glad to see community groups using the new building on a regular basis. Dunchurch is such a thriving village and as individuals and a church we love being a part of it – from joining in with the Britain in Bloom and wheelbarrow displays, to taking part in volunteering in the library, litter picking or gardening. One of our highlights is always the well-run Summer Fete (our home-made cakes sold out quickly this year, as usual!).

Since our minister Dave Woods retired in May this year we've been enjoying sermons each Sunday morning from a wide range of people – including missionaries, visiting ministers and members of our own congregation. And while we search for a new minister our team of elders is looking after our church community.

Please do join us on Sunday mornings at 10.30am. Children are very welcome to come to church (noise is no problem!) and we offer age-appropriate groups

during Sunday morning services. We'd particularly love to see you on Sunday 25th September to join our Harvest Celebration, when we'll be collecting gifts for the Foodbank and money to support overseas communities.



Our toddler group, Noah's Ark, is now firmly re-established on Mondays and Thursdays, making use of the extra space we've got in the new building. We'll be starting back after the summer holidays on Monday 12th and Thursday 15th September – but keep an eye out on the Facebook page for updates at [facebook.com/NATGDunchurch](https://facebook.com/NATGDunchurch).

We also run Messy Church five times a year, with craft activities, lunch and a Bible story for 5–11 year olds. The next two will be on Saturday 1st October and 3rd December, 10:30am–12:30pm. To book a place email [messychurch@dunchurchbaptistchurch.org.uk](mailto:messychurch@dunchurchbaptistchurch.org.uk).

Please contact one of the elders if you'd like to get in touch with us: Chris Tabor on 07899 841279 or Katie Wederell 01788 842736 [katie.w@dunchurch-baptistchurch.org.uk](mailto:katie.w@dunchurch-baptistchurch.org.uk), or the church secretary Sarah Coulon on [sarah.c@dunchurchbaptistchurch.org.uk](mailto:sarah.c@dunchurchbaptistchurch.org.uk)



## Girlguiding in Dunchurch

We build girls' confidence and raise their aspirations. We give them the chance to discover their full potential by giving them space to have fun, build friendships and gain life skills through games and crafts.

Hopefully we can offer places to girls who want to join Rainbows, Brownies and Guides but we do have a problem with not enough leaders to run

these units. Girlguiding has a lot to offer leaders; incredible friendships, wonderful experiences, good training and the opportunity to give girls the best possible guiding experience.

Come join us by registering your interest on the Girlguiding website ([girlguiding.org.uk](http://girlguiding.org.uk)) or tell someone you feel might benefit from being a part of this worldwide

organisation.

We give girls and women (young and old) the chance to do something amazing both for others and themselves!



### Advertising rates

Professionally delivered to every home and business in Dunchurch Parish including Toft, Lime Tree Village, Dunchurch Hall, Lime Tree Avenue, Tilia Park, Poets Meadow and Fernwood Estates. Over 1700 copies distributed each quarter, with an estimated readership of 3000.

Digital advertising included free of charge: advertisers can have, if required, a post on FODS Facebook Group page once a week on 'Thankful Thursday' – a useful update message for you and an effective opportunity to advertise for staff vacancies etc locally at no cost.

Size	Dimensions	Price
Full page	137mm x 197mm	£100
Half page landscape	137mm x 97mm	£50
Half page portrait	66mm x 197mm	£50
Quarter page	66mm x 97mm	£25

To place an order call Barbara on 07837 182114 or email [info@vghrugby.co.uk](mailto:info@vghrugby.co.uk)

Deadline for December 2022 issue: 1 November

### Index of advertisers

Anne-Marie Florist	26
Blossom Cottage Beauty	32
Contented Soles	40
Cordwood Tree Services	30
Courtyard Dental	22
David Wilson Homes	7
Dunchurch Cycle	22
Dunchurch Social Club	26
Dunchurch Village Hall	28
Gallaghers	35
Ian Gall Pest Control	30
Jane Archer – Artist	16
Little Grange Nursery	5
Rheams Plumbing	32
Rugby Floor Company	28
Solstice Nursery and Cafe	22
The Kitchens Inc	11
Union Carriers	30
Wanda Fashions	32
Wombles Wheels	28

# Dunchurch community directory

Badminton Group	Dunchurch Village Hall, Monday 7.30pm	judge.patricia@googlemail.com Pat Judge 01788 810253
Beavers	Boys and girls aged 5¾ – 8 Mondays & Tuesdays, Scout hut, Done Cerce Close	www.dunscout.org.uk join@dunscout.org.uk
Cubs	Boys and girls aged 8 – 10½ Wednesdays at the Scout hut, Done Cerce Close.	www.dunscout.org.uk join@dunscout.org.uk
District of Dunchurch Brass	Wednesdays 7.45–10pm, Band Room, 15 Rugby Road, CV22 6GP	Lorraine Goodacre 07963 144704 Gary Smallwood 07876 688210 www.districtofdunchurchbrass2006-web.info
Dunchurch Allotment Association	Situated on Coventry Rd	www.dunchurchallotments.org.uk admin@dunchurchallotments.org.uk Secretary Paul Sanders 01788 811744
Dunchurch Bellringers	St. Peter's Church. Sunday Service ringing 9.50-10.30am, Practice, Wed 7.45-9pm	Mike Bennett, Tower Captain, 01788 814304 mbennettmss@gmail.com
Dunchurch and Bilton Cricket Club	Based as Dunchurch Village Hall Rugby Rd.	https://dunchurchbilton.play-cricket.com
Dunchurch and Thurlaston WI	Meetings 2nd Thursday of each month, 2pm, WI Hall, Southam Rd.	Anne Gilbert 01788 811837 annegilbert1@hotmail.com
Dunchurch Band	Senior and training band	www.dunchurchband.co.uk dunchurch.band100@yahoo.com
Dunchurch Baptist Church	Baptist Church, Coventry Road.	www.dunchurchbaptistchurch.org.uk Elders, Chris Tabor 07899 841279, Katie Wederell 01788 842736, 07515 472578, Katie.w@dunchurchbaptistchurch.org.uk church secretary Sarah Coulon Sarah.c@ dunchurchbaptistchurch.org.uk
Dunchurch Boughton C of E (VA) Junior School	Primary education situated in Dew Close	www.dunchurchjuniorschool.org.uk admin3391@welearn365.com 01788 811028
Dunchurch Community Library	School Street Open Tues, Thur, Fri 10am - 5pm	www.warwickshire.gov.uk/dunchurchlibrary dunchurchcommunitylibrary@btconnect.com 01788 811355
Dunchurch Festival Group	Organise fete and other events. Meetings third Monday of each month 7.30pm at the village hall	www.dunchurchevents.org Rob Collings 01788 817307 mashedspud1@gmail.com
Dunchurch Health Walks	Tuesday 2pm, Friday 10.30am Meet at war memorial	
Dunchurch Infant School and Nursery	Nursery children are taken from aged 2yrs 9months. Other year groups, Reception, year 1 and 2	www.dunchurchinfantschoolandnursery. co.uk office@dunchurchinfants.co.uk 01788 810292

Dunchurch Pantomaniacs	Organise and perform village panto in January. Rehearsals begin October.	paul.lepoidevin@btinternet.com sueprotheroe@ymail.com
Dunchurch Parish Council	PC office based in the Library. Open Tuesday and Thursdays 10am – 1.00pm	clerk@dunchurchpc.org 01788 817550 or 07474 705061
Dunchurch Photographic Society	Meetings held at WI Hall, Southam Road	www.dunchurchps.com secretary@dunchurchps.com
Dunchurch Surgery	Dunsmore Heath (off Rugby Rd)	www.dunchurchsurgery.warwickshire.nhs.uk 01788 522448
Dunchurch Village Hall	Rugby Road	bookings@dunchurchsportsandvhall.co.uk 01788 522444
Dunchurch Voices	Ladies choir meet Wednesdays, 7.30pm at the infant school.	Barbara Davies 07890 659857
First Dunchurch Scout Group	Fun, challenge and adventure for boys and girls aged 10½–14. Done Cerce Close on Thursdays	www.dunscout.org.uk join@dunscout.org.uk
Dunchurch Girlguiding including: 1st Rainbows 3rd Brownies 1st Guides	GirlGuiding girls have fun, adventure and space to discover their potential Age 5 – 7 yrs. Wed 3.45 – 4.45 pm Age 7 – 10 yrs. Wed 5.00 – 6.30pm Age 10 - 14 yrs. Wed 6.45 – 8.15pm	www.girlguiding.org.uk is where parents/ carers may express their daughters' interest in joining. Adult volunteers welcomed.
Friends of Dunchurch Society	Organises Britain in Bloom and Winter Wonderland Produces the village magazine	info@vghrugby.co.uk 07837 182114 fodnews1@gmail.com
Knowing Stillness Meditation	Dunchurch Library 10am Wednesday	Jim Hesketh 01788 891066
Rugby About Turn	Newsletters on local development	richardallanach@aol.com
Rugby Village Bridge Club	EBU Affiliated. Four pairs sessions and three practice sessions weekly Courses/ teams occasionally. Held in club room, Dunchurch Village Hall.	www.rugbyvillagebridge.co.uk rugbyvillagebridge@gmail.co.uk 07710 467023
St Peter's Church	Vicar: Reverend Patricia Townshend revptownshend@gmail.com, 01788 461987 Churchwardens: Celia Jones 01788 314564 / 07712 936355 Kathryn Fowler: 07780 116024 / 01788 311118 Thurlaston Deputy Churchwarden: Brian Bowsher: 01788 812094 churchwarden@stpeters-dunchurch.org	

To make any amendments or to add your Dunchurch-based, non-commercial club or organisation, please email  
[friendsofdunchurch@gmail.com](mailto:friendsofdunchurch@gmail.com)

Podiatry clinic & Shoe Fitters for all foot types

Degree Qualified HCPC Registered Podiatrist/Chiropodist

**We are Rugby and Bilton's premiere podiatry/chiropody clinic and footwear specialists. We pride ourselves in being friendly and approachable and will only offer advice and treatment that is in your best interests to help you.**

## General Podiatry and Chiropody services

Including:

- Nail cutting
- Corns & Calluses
- Diabetic foot care
- Verrucae
- Ingrown toenails
- Nail reconstruction
- Warm wax massage for hands and feet
- Fungal infections
- Home visits



Richard has carried out extensive training and specialises in the following:

- Nail surgery for ingrown nails
- Steroid/ hyaluronic acid injections
- Gait analysis/ biomechanical assessment
- Bespoke insoles created using the latest 3d laser scanning technology

### NEW FOR 2022!!!

Minor skin surgeries now available including:

- Permanent surgical corn removal
- Verruca needling or surgical removal
- Suspicious mole/lesion biopsy and removal



THE PERFECT FIT FOR WIDER FEET



[www.contentedsoles-bilton.co.uk](http://www.contentedsoles-bilton.co.uk)

**30a The Green. Bilton. CV22 7LY**

**01788 877575**